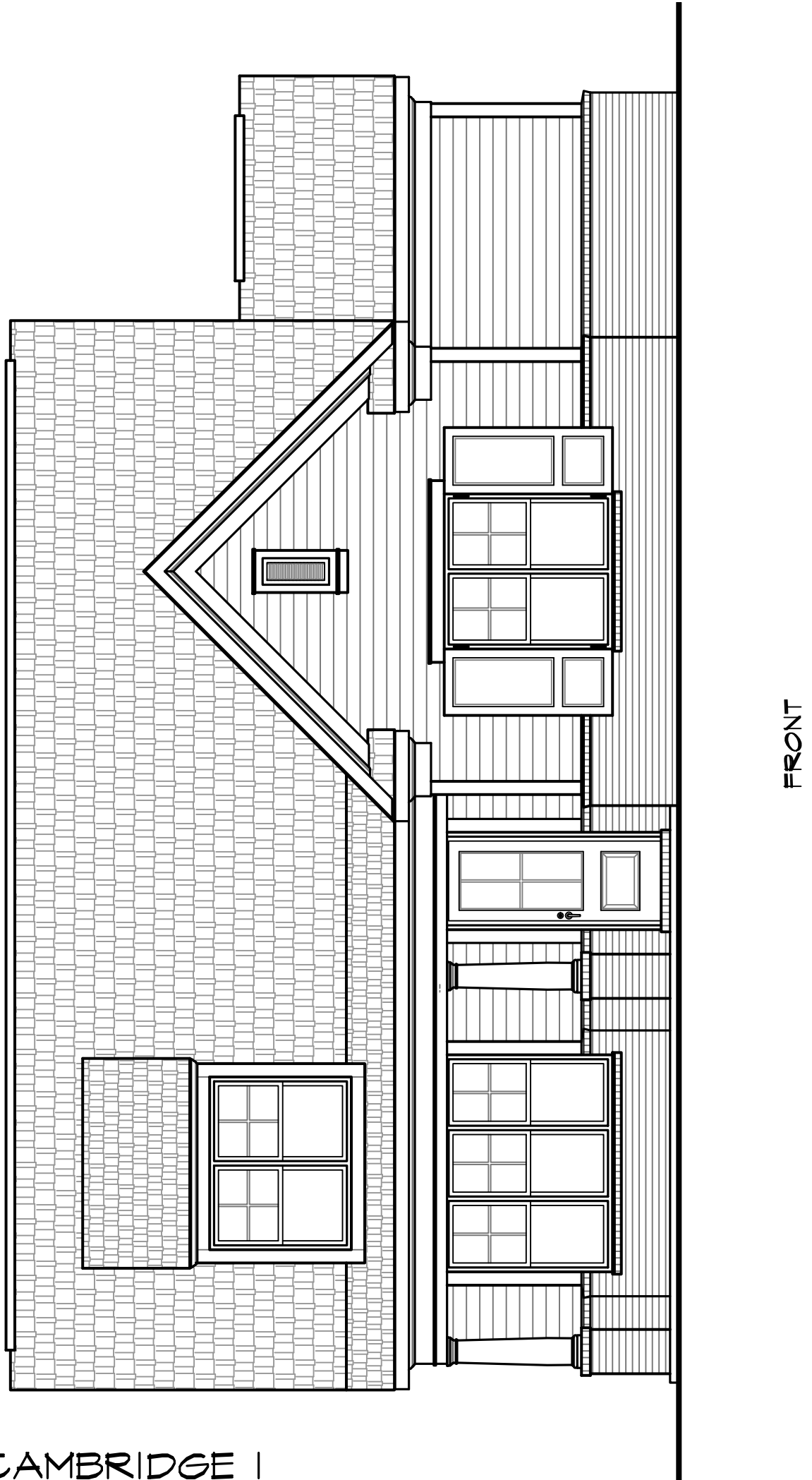


**THE CAMBRIDGE I**  
OVERALL WIDTH: 48'-7"  
OVERALL DEPTH: 65'-7"  
CDG# 2423-49-66

AREA CALCULATIONS	
FIRST FLOOR HEATED	1,781 sqft
SECOND FLOOR HEATED	642 sqft
TOTAL HEATED	2,423 sqft
FRONT PORCH	121 sqft
COVERED PORCH	188 sqft
GARAGE	518 sqft
TOTAL FOOTAGE	3,250 sqft
FIRST FLOOR CEILING HGT. 9'-0"	
SECOND FLOOR CEILING HGT. 8'-0"	



THE CAMBRIDGE I  
OVERALL WIDTH: 48'-7"  
OVERALL DEPTH: 65'-7"  
CDG# 2423-49-66